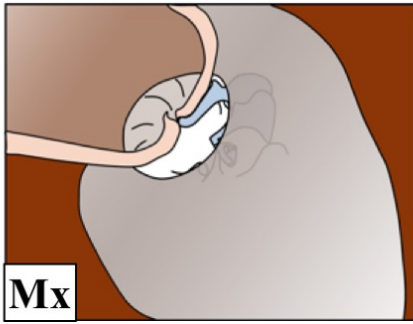


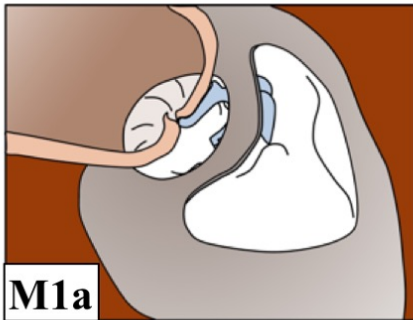
IOOG Categorisation of Mastoid Surgery – SAMEO Scheme

refer to SAMEO-ATO scheme for detail



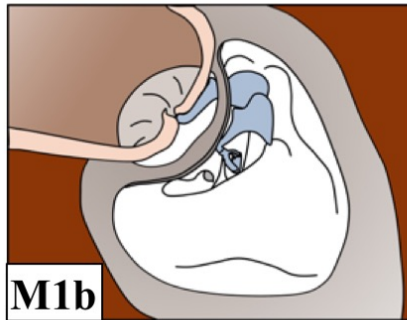
Mx

no mastoidectomy



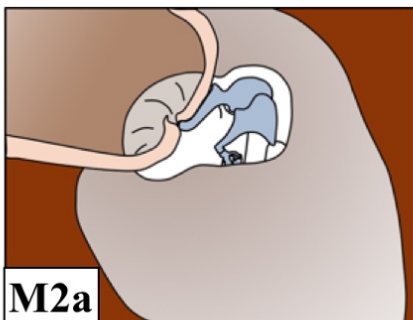
M1a

canal wall preserved



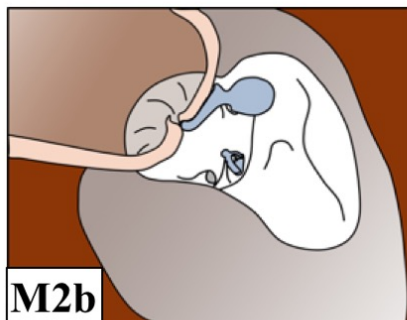
M1b

+ posterior tympanotomy



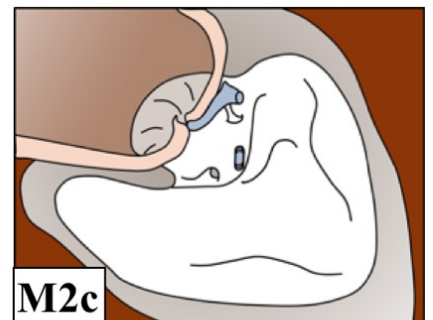
M2a

only scutum removed



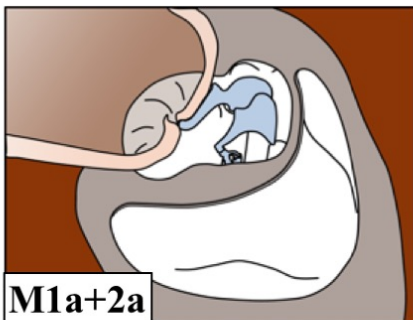
M2b

scutum + postero-superior wall removed



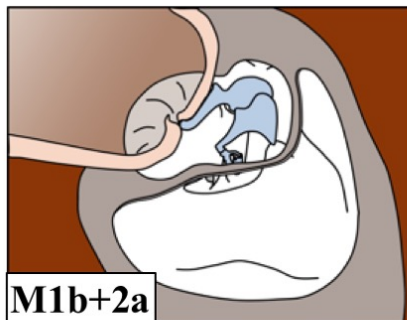
M2c

whole canal wall removed



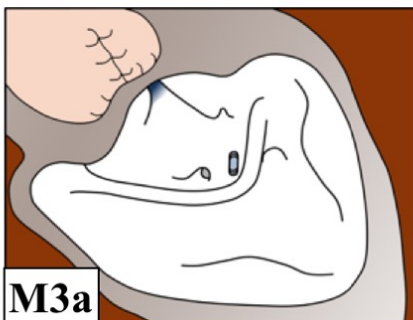
M1a+2a

combination of M_{1a} and M_{2a}



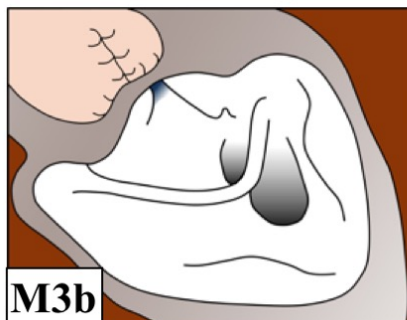
M1b+2a

combination of M_{1b} and M_{2a}



M3a

subtotal petrosectomy;
otic capsule preserved



M3b

subtotal petrosectomy;
otic capsule removed